

Safer and Stronger Scrutiny Committee

16 February 2017



Sheffield Safer and Sustainable Communities Partnership

- Statutory Community Safety Partnership
 - Lead by Police and Local Authority
 - Bring together expertise, knowledge, consistency of action
- Statutory requirement to have a local strategy for tackling community safety issues



Community Safety Priorities

- Joint Strategic Intelligence Assessment of 12 months crime and disorder information
- Partnership Plan 2014-17, refreshed annually.
- 2016/17 priorities:
 - Crime: Hate crime, Burglary, Violent crime
 - Vulnerable people: Those who are vulnerable due to domestic abuse, ASB
 - High risk: organised crime and its links to other crimes
 - High impact: preventing child sexual exploitation, preventing people from radicalisation or extremism

Budget for community safety 2016/17

- £450k PCC grant to address PCC priorities:
 - PCSOs
 - Partnership analyst
 - Supporting and protecting vulnerable people
- £75k SCC community safety
 - Support and advice for new arrivals to Sheffield
 - Specific projects in localities to prevent and reduce crime and ASB



Budget 2017/18

- Reduction since 2016/17
- Fit with PCC priorities, response to emerging issues
- New Partnership Plan (strategy) for 2017-20 in development, informed by findings of JSIA



Current performance

- Overall crime levels are unchanged over the last year and many crime types are reducing
- Lower than the average for the Most Similar Group
- Youth re-offending has decreased, as well as young people entering custody.

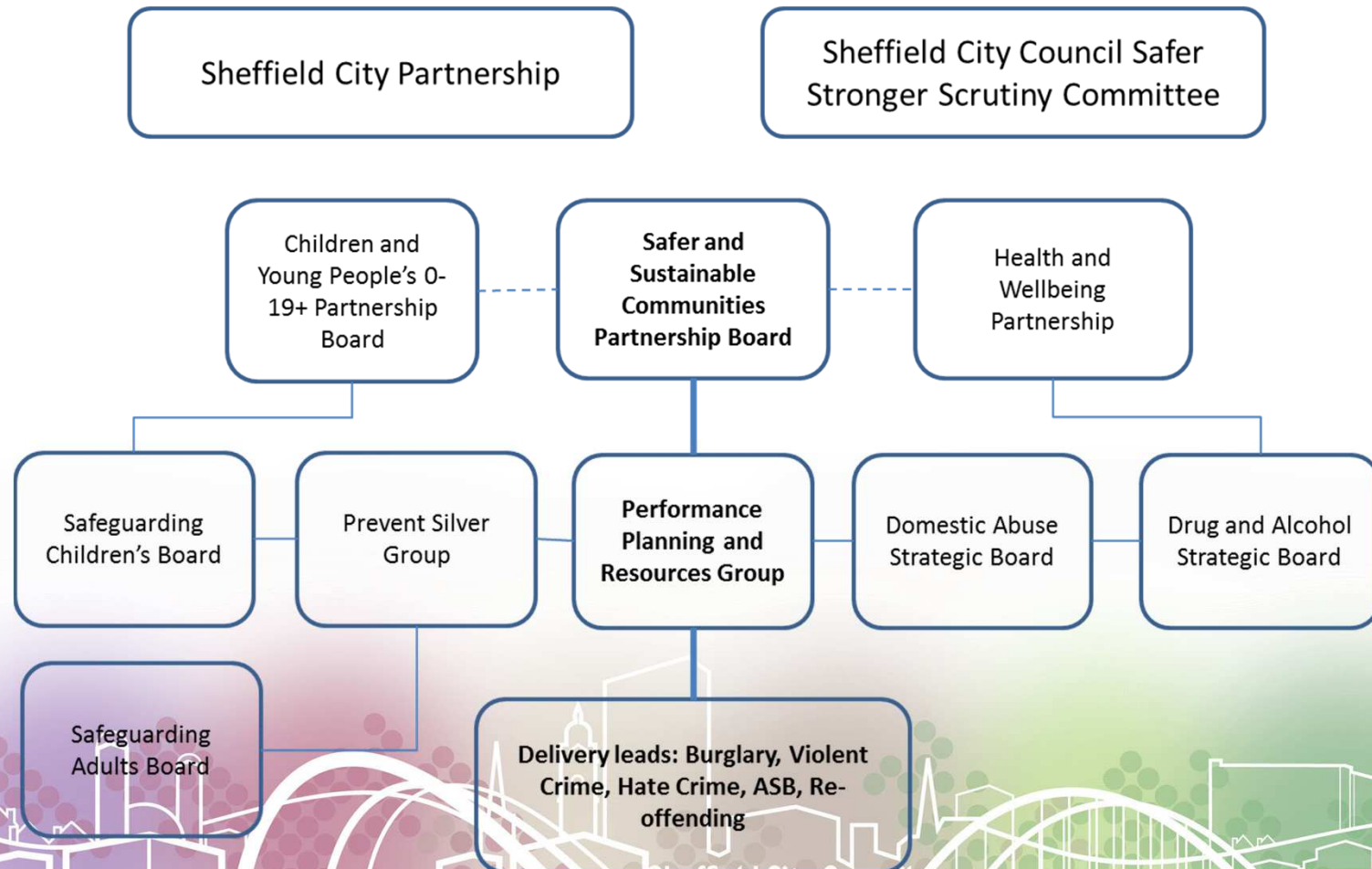


Performance

- Burglary remains a challenge
- Hate crime increasing but numbers are small and reporting is being encouraged among all communities and protected groups
- Some anti-social behaviour increasing



Changing partnership landscape



Delivery leads: Burglary, Violent Crime, Hate Crime, ASB, Re-offending

New multi-agency team

- Brings together some existing community safety team staff and housing anti-social behaviour enforcement officers, housing wardens and South Yorkshire Police in a co-located multi-agency team
- Plans for further resources to support partnership priorities



Communications

- New SYP structures in 2017, neighbourhood policing
- Members will be kept informed of developments
- Relevant local issues (anonymised) communicated as necessary



Restorative Justice

- Brings together those harmed and those who are responsible together to find a positive way forward.
- Mediation used by Housing to resolve neighbour disputes
- Community Justice Panels for low level crime and neighbour disputes
- Street RJ delivered by the Police

This page is intentionally left blank